



Established in 1967



Nutri-Tech
A System for Life

10", 15" & 20"
STAINLESS STEEL WATER FILTERS

FILTER & CARTRIDGE:

- Installation Instructions
- Care & Use Service
- Helpful Maintenance Hints
 - Warranties

VERSION EN ESPAÑOL AL REVERSO

INSTALLATION AND CARTRIDGE REPLACEMENT LOG

Original Installation Date: _____

Cartridge Replacement Dates:

_____	_____
_____	_____
_____	_____
_____	_____
_____	_____

Notes: _____

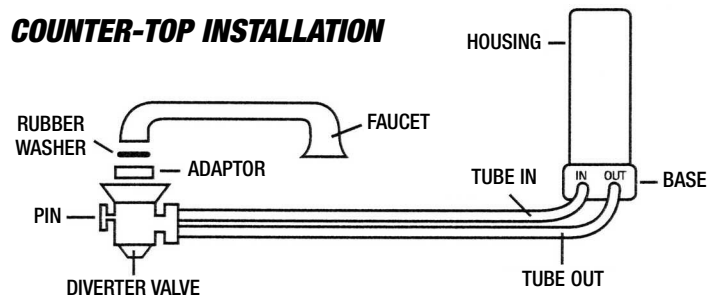
**PLEASE SAVE THIS
BOOKLET**

CONGRATULATIONS! You have made a wise decision to provide yourself, family, and friends, with healthful great tasting water. Your Carico Nutri-Tech Stainless Steel water filter utilizes a high quality sub-micron ceramic cartridge and selective multi-stage adsorbants for the most effective “point of use” filtration to remove a wide range of contaminants.

CARE AND USE

Read all instructions carefully before using your water filter. The instructions will show you in detail how to install, use and maintain your water filter so as to get maximum health benefits and savings. Store these instructions away for easy reference. Carico recommends you contact a plumber for under counter installation. **In no event will Carico be liable for direct or consequential damages caused from improper installation or from any defective units or part thereof, abuse, neglect, accident, etc.** Follow all instructions, check all parts, inspect for leaks immediately upon starting the unit and follow all maintenance and inspections suggested. Replace cartridges at lease once a year.

COUNTER-TOP INSTALLATION



1. Remove aerator containing wire mesh screen found on the end of your faucet by rotating the aerator in a counter-clockwise direction by hand or with pliers.
2. Thread the diverter valve on the end of the faucet. If the diverter valve does not fit, use one of the two adapters provided in your parts kit. When the adapter is used, insert the rubber-sealing washer between the end of the faucet and the adapter. In rare cases, a special adapter may be required which can be found in any hardware supply store.
3. You can neatly attach the tubing to your faucet with the lock ties. Do not pull lock ties too tight or the water flow will be cut off.
4. Make sure all connectors, tubing, etc., are firmly attached before using.
5. You are now ready to receive filtered water from your faucet. Simply turn on your COLD WATER faucet and pull out pin on your diverter valve. When you turn off the faucet, the pin will snap back into place returning you back to unfiltered water.
6. Run water for a couple of minutes to flush filter before using.
7. When filtering water, the best results will be achieved if the flow of water is about 1/2 of a gallon per minute (a slow to medium flow).

PLEASE NOTE: FILTER COLD WATER ONLY.

UNDER COUNTER INSTALLATION

The service of a certified plumber is highly recommended.

1. **Assemble faucet.** Remove section of plastic tubing located near black lever. Insert spigot in opening near black lever and press it in firmly. Determine where you want the faucet located. Most people mount the faucet with the water turn-on lever in back of the spigot; however, it can be mounted in front or to either side of spigot.
2. **Drill hole in sink or counter-top.**
 - A. Available hole - If the standard 1-1/2" diameter hole is available, it may be used for this installation. Some sinks also have sprayers. You can remove these and use that hole if you wish.
 - B. Vitreous china sink - **DO NOT** attempt to drill in this material. Drill the hole for the spigot in counter-top instead.
 - C. Porcelain clad cast iron sink - (Use extreme care or drill the hole for the spigot in counter-top.) Using a 7/16 or 1/2-inch carbide drill bit, select desired position on flat area of porcelain. Choose a point at least 4" from corner of sink. Place tip of carbide drill at that point. **BEFORE** starting rotation, firmly apply downward pressure until a slight crunch is heard. This will fracture a small area of porcelain and prevent the drill from walking. Begin drilling the hole, keeping a steady downward pressure.
 - D. Stainless steel sink - Drill 7/16 or 1/2 inch hole in desired area of sink with high speed drill bit.
 - E. Formica Top - Drill 7/16 or 1/2 inch hole using carpenter's drill or high speed drill bit.

3. **Mount faucet** (See Figures A, B & Photo 1). Place small rubber washer, black plate, and large rubber washer over the base of the faucet in that order. Place threaded portion of the faucet through drilled hole so that the faucet is in desired position. Secure in place with plastic disc, lock washer, and nut. You may wish to use a wrench on faucet to hold it in the desired position. Place a cloth between the jaws of the wrench and the faucet to prevent damage to the finish.

4a. **Saddle Valve Mount onto Copper Pipe** (Optional and available upon request, see Figure A & Photo 2): Shut off COLD WATER supply line and place Saddle Valve (Photo 2) around copper pipe ABOVE shut-off valve (Figure A) on the COLD WATER SIDE. Use clamping screw and saddle to attach to copper pipe - small radius 1/4" to 3/8" diameter or large radius for 7/16" to 5/8" diameter. Tighten clamping screw until Saddle Valve is secure. Turn piercing screw clockwise all the way until it stops. LEAVE IN CLOSED POSITION.

4b. **Flexible Connection Hose when there is no No Copper Pipe** (See Figure B): Shut off COLD WATER supply line and disconnect existing Flexible Connection Hose from the cold water shut-off valve. Add Teflon tape to cold water valves threads and screw on the Angle Stop Valve (Photo 3). **DO NOT OVERTIGHTEN.** Connect Flexible Connection Hose to the top of the Angle Stop Valve (Photo 3).

5. **Determine convenient under sink location** for filter housing, (generally right side of cabinet).

6. **Cut tubing to desired length.** **DO NOT CUT PIECES TOO SHORT;** some play is necessary to make future cartridge cleaning or replacement easy. Extra tubing can be used for optional ice-maker hook-up as explained in Item 11.

7. **Clear Plastic Tube Connections** (Shown in Figure A & B):

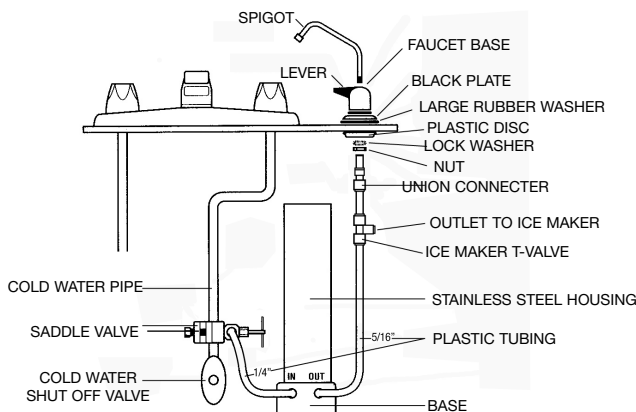
A. Put teflon tape around threaded portion of faucet. Screw on the 5/16" union connector (Figure B & Photo 5) onto the water filters faucet threaded pipe protruding from under the counter (NOTE: If using ice-maker hook-up go to #11 for additional instructions before proceeding). Firmly insert 5/16" clear plastic tube into the union connector and then firmly insert its other end into the "OUT" port of the water filters base. (See Figure C for how quick connect fittings work) (Proceed to B1 & B2)

UNDER COUNTER KIT COMPONENTS

Qty	Description	Code	
1	Universal Faucet*	FILFAUC	(Photo 1)
1	Saddle Valve	FILSVAL	(Photo 2)
1	Angle Stop Valve	FILUCASV	(Photo 3)
1	Ice Maker T-Valve	FILUT56	(Photo 4)
1	Union Connector	FILUC56	(Photo 5)
1	5/16 - 1/4" Reducer	FILRU14	(Photo 6)
1	1/4" Tubing	FILTB41	
1	5/16" Tubing	FILTB56	

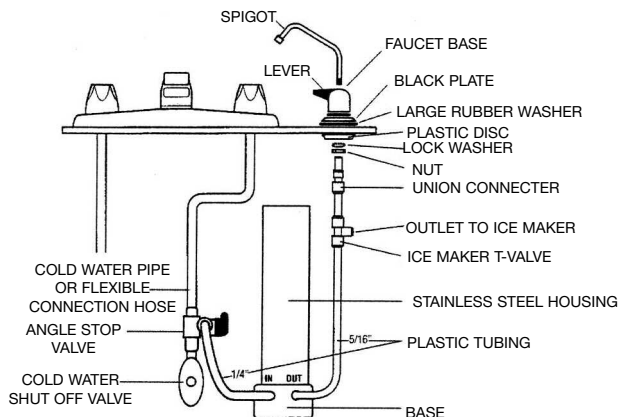
* Kit will include faucet model ordered

FIGURE A



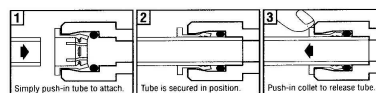
Be sure to install Saddle Valve to COLD WATER pipe only.

FIGURE B



Be sure to install Angle Stop Valve to COLD WATER pipe only.

FIGURE C



QUICK CONNECT FITTINGS

B1. If Copper Pipe, firmly insert one of the 1/4" clear plastic tube into the saddle valve (See Figure A). Insert its other end into the "IN" port of the water filter's base.

B2. If Flexible Connection Hose, firmly insert 1/4" clear plastic tube into the Angle Stop Valve (Photo 3) quick connect outlet and its other end into the "IN" port of the water filter base.

8. **Open faucet.** If Universal Model, (Photo 1) lift black lever. If Classic Model, turn knob on. Turn cold water line back on. Allow water to run for a couple of minutes to flush filter.

9. If **Saddle Valve** mounted, to get maximum flow, open valves piercing screw (counter clockwise) all the way. For maximum performance adjust water flow to 1/2 a gallon per minute (one ounce per second).

10. **Turn filter upside down** to release air bubbles. **Turn off faucet** to check for leaks. Make adjustments if necessary.

11. Ice-Maker Hook-Up.

A. Cut-off and use a 2" to 3" piece of the 5/16" clear plastic tube and firmly insert one end into the union connector that's threaded onto the pipe protruding under the counter (Read Item 7A. See Figures A, B & Photo 5). Firmly insert other end of this small tube piece into one end of the 5/16" Ice Maker T-Valve's quick connect (Figures A, B & Photo 4).

B. You can now insert a longer 5/16" tube into the open end of the 5/16" Ice Maker T-valve (Photo 4) and the tube's other end into the "OUT" port of the water filter base. **NOTE:** Be sure 5/16" tube is long enough and has some play in it.

C. Firmly insert the tube* that will go to ice maker into the last open end of the Ice Maker T- valve (Figures A, B & Photo 4).

Go back to Items 8 & 9 and follow instructions.

*NOTE: Since most ice maker hook-up tubes are 1/4" a 5/16" - 1/4" Reducer (included, Photo 6) will need to be added. Place a 3"- 4" piece of 5/16" tubing into the center portion of the T-valve (Photo 4). Then insert the 5/16" tubing into the 5/16 end of the reducer and insert 1/4" tubing into the other end of reducer leading to refrigerator.

Remember **SHUT OFF COLD WATER** valve when working on filter.

Optional



Photo 1
Universal
Faucet



Photo 2
Saddle
Valve



Photo 3
Angle Stop
Valve



Photo 7
Ice Maker
Hook Up Example



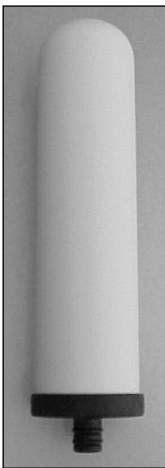
Photo 4
Ice Maker
T-Valve



Photo 5
Union
Connector



Photo 6
5/16" - 1/4"
Reducer



CARTRIDGE INSTALLATION

NOTE: Cartridge is packaged separately and must be installed into water filter.

- 1a. **10" Filter** - Unscrew clamp ring, that is holding upper housing to the base, using the tool provided and by using a counter-clockwise motion to remove it.
- 1b. **15" & 20" Filters** - Unscrew housing from base turning counter-clockwise. Remove cartridge from box.
2. Remove any packing that may be protecting cartridge.
3. Prior to inserting ceramic cartridge into filters base, check to ensure that the small "O" rings located on the end cap stem are properly fitted into their channels.
4. Insert ceramic cartridges end cap stem into the base and firmly press it down taking care to keep ceramic clean and to avoid chipping or fracturing it.

5. Prior to fitting the upper housing onto the base make sure the large rubber washer ring is seated in the channel around and just below the outside threads on the housing.

6. **For 10" Filters** - Fit upper housing onto the base and screw on the clamp ring in a clockwise motion, using tool provided.

CARTRIDGE CLEANING OR REPLACEMENT

When the water flow rate coming out of your filter slows, it is an indication that the fine pores on the surface of the ceramic cartridge have become blocked by algae, bacteria, rust particles, etc. it is time to clean the ceramic element per the following directions:

1. Lift up lever on filter faucet, turning water on.
2. Turn off water going to the filter at the Angle Stop Valve (Figure B).
3. Hold filter above a sink or in a bucket to avoid spillage prior to unscrewing filter's housing from the base in a counter-clockwise direction to remove clamp ring.
4. CAREFULLY pull out ceramic cartridge from filters base.
5. Hold the cartridge under cold running water and clean with the scrub pad provided or with a soft brush. Be sure pad or brush contains NO detergents or soap.
6. Periodically lubricate the housing threads with petroleum jelly (Vaseline) for ease of cartridge removal and cleaning.
7. Prior to inserting ceramic cartridge into filters base, check to ensure that the small "O" rings located on the end cap stem are properly fitted into their channels.
8. **10" Filter only** - Insert ceramic cartridges end cap stem into the base and firmly press it down taking care to keep ceramic clean and to avoid chipping or fracturing it.
9. Prior to fitting the upper housing onto the base make sure the large rubber washer ring is seated in the channel around and just below the outside threads on the housing.
10. **10" Filter** - Fit upper housing onto the base and screw on the clamp ring in a clockwise motion, using tool provided. Turn on inline valve water supply.
- 10a. **15" & 20" Filters** - Place cartridge into the stainless steel housing and securely tighten base to housing. Turn on water supply to filter.
11. Check for leaks.
12. Be sure to replace your cartridge at least once a year. In very high sediment areas or in other extreme conditions you should consider replacing it more frequently (See Cartridge Warranty).

HELPFUL MAINTENANCE HINTS

Indication: Leaks.

Solution: Inspect all connections and tubing. Movement of the filter may cause loosening of fittings or crimping of tubing. Turn off cold-water source and tighten fittings or replace damaged tubing.

Indication: Water flow is unsatisfactory.

Solution 1: Normal water flow from the filter is approximately one-half gallon per minute. If, after cleaning, the flow has not improved, it may be the cartridge needs replacing, especially if the quality of the water being filtered is poor.

Solution 2: Turn filter upside down to see if air bubbles are still in filter.

Indication: Burst tubing.

Solution: This situation is usually caused by hot water being used. See warranty detail that offers you a replacement at any time, for one-half the price.

Indication: Diverter Valve Pin/Lever sticks.

Solution: Disconnect Diverter Valve assembly from the faucet and soak over night in white vinegar. This will generally clear out calcium build up inside the assembly. See warranty detail that offers you a replacement at any time, for one-half the price.

Indication: None of the above solutions have helped.

Solution: Please contact Carico's Water Department via email, telephone, or by letter to address listed below.

LIMITED WARRANTY

Carico International, Inc. ("Carico") warrants the stainless steel filter housing of your Nutri-Tech System ("System") to be free from defects in material and workmanship for the lifetime of the original purchaser; and warrants its cartridges for twelve (12) months on a pro rata basis from the purchase date by the original purchaser. If for any reason you want to replace your cartridge sooner, you must pay Carico a minimum charge of twenty five percent (25%) of the retail price of the cartridge at the time you seek replacement; after which your cartridge is prorated at one twelfth (1/12) its current replacement cost for each month from the date of purchase in excess of three, plus shipping and handling. This warranty extends only to the original purchaser of the System, and does not apply if: (1) the System has been altered in any way; (2) if the purchaser fails to follow Carico's instructions for proper care of the System; and/or (3) if the purchaser fails to replace the cartridge within one (1) year.

IN NO EVENT SHALL CARICO, ITS AFFILIATES, SUBSIDIARIES, RELATED ENTITIES OR THEIR RESPECTIVE OFFICERS, DIRECTORS, OR EMPLOYEES, BE LIABLE

FOR INCIDENTAL, CONSEQUENTIAL, PUNITIVE, EXEMPLARY, OR SPECIAL DAMAGES RESULTING FROM THE USE OF THIS PRODUCT, OR ARISING OUT OF ANY BREACH OF THIS WARRANTY. (As examples, this excludes damages for lost time; travel to and from Carico, and cost of shipping to and from Carico. The items listed are not exclusive, but are for illustration only.) **ALL EXPRESS AND IMPLIED WARRANTIES, INCLUDING THE WARRANTY OF MERCHANTABILITY, ARE LIMITED TO THE PERIOD OF THE LIMITED WARRANTY.** Some states do not allow the exclusion or limitation of incidental or consequential damages, or limitations on how long an implied warranty lasts, so the exclusions may not apply to you. This warranty gives you specific legal rights and you may also have other rights which vary from state to state.

Carico's sole obligation under this limited warranty or any implied warranty, and the purchaser's sole remedy, is, at Carico's sole discretion, limited to the repair or replacement of the Stainless steel housing or the replacing the cartridge on a prorated basis of Carico's suggested retail purchase price at the time of replacement plus shipping and handling to and from the address below.

If the Product has a defect in material or workmanship in the first thirty (30) days from the date of purchase, Carico will repair or replace the unit at no cost to the original purchaser; provided the original purchaser immediately notifies Carico within said thirty (30) days as detailed below.

If the System is damaged or destroyed by misuse, neglect, accident or act of God, including but not limited to, fire, flood, storm and/or earthquake, Carico will replace the System for fifty percent (50%) of Carico's suggested retail purchase price at the time replacement is sought plus shipping and handling to and from the address below. To obtain coverage under this Limited Warranty, Purchaser must submit proof of loss and proof of original purchase to Carico in writing within sixty (60) days of occurrence.

When returning product to Carico, all returns require a return authorization number. Write, call or email:

CARICO INTERNATIONAL, INC
2851 West Cypress Creek Road
Fort Lauderdale, FL 33309
1-800-440-1434
1-954-973-3900 - International
Email: customerservice@carico.com
www.carico.com

The duration, terms and conditions of this warranty are valid worldwide, except where different limitations, restrictions or conditions may be required by local law.



Establecida desde 1967



Nutri-Tech
A System for Life

**FILTRO DE AGUA DE ACERO INOXIDABLE DE
10", 15" y 20"**

Filtro & Cartucho:

- Instrucciones para la instalación
- Cuidado y uso
- Sugerencias para el mantenimiento
- Garantías

ENGLISH VERSION ON REVERSE SIDE

**REGISTRO DE
INSTALACIÓN Y
REEMPLAZO DE
CARTUCHOS**

Fecha de instalación original: _____

Fecha(s) de reemplazo del cartucho:

_____	_____
_____	_____
_____	_____
_____	_____
_____	_____

Notas: _____

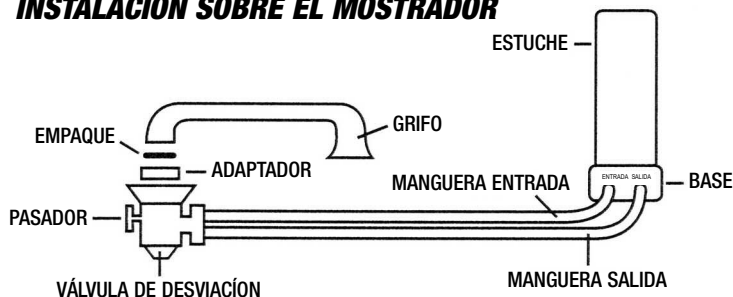
**POR FAVOR GUARDE
ESTE FOLLETO**

¡FELICITACIONES! Usted ha hecho la decisión correcta al proveer para usted, su familia y amistades agua saludable y de buen sabor. Su sistema de filtración de agua de acero inoxidable utiliza un cartucho de cerámica submicrónica de alta calidad y selectivos absorbentes de etapas múltiples para la filtración “punto de uso” más efectiva para remover una amplia gama de contaminantes

CUIDADO Y USO

Lea todas las instrucciones cuidadosamente **antes** de utilizar el filtro. Estas le mostrarán en forma detallada como instalar, usar y mantener su filtro para conseguir el mayor beneficio para su salud además de ahorros. Guárdelas para futura referencia. Carico le recomienda que llame a un plomero para la instalación por debajo del mostrador. En ningún momento Carico no se hará responsable por daños directos o a consecuencia de una instalación inadecuada o por cualquier unidad o pieza defectuosa del mismo, o por abuso, negligencia, accidente, etc. Siga todas las instrucciones, revise todas las piezas, asegúrese de que no hayan escapes tan pronto comience a filtrar el agua y siga todas las instrucciones para mantenimiento e inspecciones sugeridas. Reemplace los cartuchos por lo menos una vez al año.

INSTALACIÓN SOBRE EL MOSTRADOR



1. Desenrosque la boquilla que contiene la malla metálica, ubicada en la abertura de salida del grifo de su fregadero, haciéndola girar en dirección opuesta a las manecillas del reloj con la mano o con la ayuda de unas pinzas.

2. Enrosque la válvula de desviación en la abertura de salida del grifo. Si la válvula no encaja, utilice uno de los dos adaptadores que vienen en el juego de piezas. Si utiliza un adaptador, asegúrese de instalar el empaque de goma negra entre la llave y el adaptador. En raras ocasiones se necesitará un adaptador especial que usted podrá encontrar en cualquier ferretería.

3. Asegúrese de sujetar correctamente las mangueras al grifo de agua con las tiras plásticas provistas. Tenga cuidado de no ajustar demasiado para que no impida el paso del agua por la manguera.

4. Asegúrese de que todas las uniones y mangueras estén firmemente conectados antes de usarlo.

5. Ya está usted listo para recibir agua filtrada de su grifo. Simplemente abra la llave de AGUA FRÍA y tire del pasador de la válvula de desviación. Cuando usted cierre la llave, el pasador retornará automáticamente a la posición inicial de agua no filtrada.

6. Antes de utilizar el filtro, deje correr agua por un par de minutos para que se limpie.

7. Usted obtendrá óptimos resultados al filtrar el agua si mantiene el flujo del agua a razón de 1/2 galón por minuto.
(Un promedio de flujo de mediano a lento.)

Recuerde: Filtre AGUA FRÍA solamente. NO filtre agua caliente.

INSTALACIÓN BAJO EL MOSTRADOR

Se recomienda que esta instalación sea hecha por un plomero certificado con licencia.

1. **Para armar la espita:** Remueva la sección de tubo plástico localizado cerca de la palanca negra. Inserte la espita por la abertura junto a la palanca negra y empújela firmemente. Determine el lugar donde desee colocar la espita. La mayoría de las personas montan la espita con la palanca detrás, sin embargo, puede montarse con la palanca al frente o cualquiera de los dos lados.

2. **Taladre un agujero en el fregadero o en el mostrador.**

A. Agujero disponible: Si el fregadero trae el agujero estándar de 1-1/2" de diámetro, este puede utilizarse para la instalación. También puede instalarse utilizando el agujero donde algunos fregaderos tienen un rociador.

B. Fregaderos de porcelana vitrificada: **NO intente taladrar** este material. En este caso, realice la instalación en el mostrador.

C. Fregaderos de hierro fundidos, revestidos de porcelana. Opere con mucho cuidado. (En caso de duda, instale la espita en el mostrador.) Utilizando una broca de 7/16" ó 1/2" de punta de carburo, elija un lugar en la parte más plana de la porcelana que quede por lo menos a 4" de la esquina del fregadero y coloque allí la punta de la broca. **Antes** de hacerla girar, con firmeza, ejerza presión hacia abajo, hasta que un ligero ruido le indique que la porcelana se ha roto en ese punto, esto evitará que el taladro se traslade lateralmente. Comience a taladrar el agujero ejerciendo una presión vertical continua y uniforme.

D. Fregadero de acero inoxidable: Taladre en el fregadero un agujero de 7/16" ó 1/2" con una broca de acero de alta velocidad en el lugar de su elección.

E. Mostrador de formica: Taladre un agujero de 7/16" o 1/2" utilizando un taladro de carpintero o una broca de alta velocidad.

3. **Monte la espita** (Ver ilustraciones A, B y foto1): Coloque sobre la espiga rosca situada en la base de la espita, una arandela de goma pequeña, una arandela negra y otra arandela grande de goma, en este orden, y pásela por el agujero previamente perforado de modo que la palanca quede en la posición deseada. Asegúrela en posición por medio del disco plástico, una arandela de seguridad y la tuerca. Si lo desea, utilice una llave de tuercas sobre las partes planas de la espita para que ésta no se mueva, pero utilice un paño entre ambas para evitar rayar el acabado de la espita.

4a. **Montaje de válvula de abrazadera sobre Tubería de Cobre** (Es opcional y está disponible por petición, ver ilustración A & Foto 2): Se desconecta la línea de suministro de AGUA FRÍA y se coloca la Válvula de Abrazadera (Foto 2) alrededor de la tubería de cobre POR ENCIMA de la válvula de cierre (Figura B) del LADO DEL AGUA FRÍA. Se utiliza tornillo perforador y montaje para hacer la conexión a la tubería de cobre (diámetro entre 1/4" y 3/8" de radio pequeño o diámetro entre 7/16" y 5/8" de radio grande). Se aprieta el tornillo de sujeción hasta que quede totalmente asegurada la Válvula de Abrazadera. Se gira el tornillo de traspaso en el sentido de las manecillas del reloj totalmente hasta que se detenga. SE DEJA EN POSICIÓN DE "CERRADO".

4b. **Manguera de conexión flexible cuando no hay Tubería de Cobre** (Ver ilustración B): Se desconecta la línea de suministro de AGUA FRÍA y se desconecta la manguera de conexión flexible existente de la válvula de cierre del agua fría. Se agrega cinta de Teflón en la rosca de la válvula del agua fría y se atornilla sobre la válvula de cierre de ángulo (Foto 3). EVITE SOBREPARETARLA. Conecte la manguera de conexión flexible a la parte superior de la válvula de cierre de ángulo (Foto 3).

5. **Escoja la posición** más idónea debajo del fregadero para la colocación del filtro. (Usualmente será a la derecha del gabinete.)

6. **Corte el tubo al tamaño deseado.** NO CORTE LAS PIEZAS MUY JUSTAS. Es conveniente que tengan cierto juego para así facilitar la limpieza del cartucho. Puede utilizar un pedazo de tubo adicional para instalar una máquina para hacer hielo como se explica en el #11.

7. **Conexiones del tubo plástico transparente** (Ver ilustración A):

A. Coloque la cinta adhesiva de teflón en la rosca del grifo. Atornillar el conector de unión de 5/16" (ilustración B & Foto 5) en la tubería rosca del grifo del filtro de agua, empujando hacia afuera desde por debajo del mostrador (NOTA: Si se va a utilizar la conexión de la máquina de hacer hielo, refiérase al numeral 11 para que obtenga instrucciones adicionales antes de realizar el procedimiento). Inserte firmemente el tubo de plástico transparente de 5/16" en el conector de unión y luego

INSTALACIÓN BAJO EL MOSTRADOR

Cantidad	Pieza	Código	
1	Grifo Universal*	FILFAUC	(Foto 1)
1	Válvula de cierre "inline"	FILSSALV	(Foto 2)
1	Válvula de cierre de ángulo	FILUCASV	(Foto 3)
1	Válvula T para la máquina de hacer hielo	FILUT56	(Foto 4)
1	Conector de unión	FILUC56	(Foto 5)
1	Reductor 5/16" - 1/4"	FILRU14	(Foto 6)
1	Manguera 1/4"	FILTB41	
1	Manguera 5/16"	FILTB56	

*El juego incluirá el modelo de grifo ordenado

inserte firmemente su otro extremo en el puerto de "SALIDA" de la base del filtro de agua. (Ver ilustración C para información sobre cómo hacer una conexión rápida). (Refiérase a B1 & B2).

B1. Para tubería de cobre, inserte firmemente una de las mangueras plásticas transparentes de 1/4" en la válvula de abrazadera (Ver ilustración A). Prosiga a insertar el otro extremo en la "entrada" de la base del filtro.

B2. Para manguera de conexión flexible, inserte firmemente la manguera plástica transparente de 1/4" a la salida de conexión rápida de la válvula de cierre de ángulo (Foto 3). Prosiga a insertar el otro extremo en la "entrada" de la base del filtro.

8. **Abra el grifo.** Si se trata del Modelo Universal (Foto 1), levante la palanca negra. Abra nuevamente la línea de agua fría. Deje que fluya el agua por un par de minutos para permitir que se limpie el filtro.

9. **Si se monta la válvula de Abrazadera,** para conseguir un flujo máximo, abra el tornillo perforador (en sentido contrario a las manecillas del reloj) totalmente. Para lograr un máximo desempeño, ajuste el flujo de agua hasta fi galón por minuto (una onza por segundo).

10. **Gire el filtro hacia abajo** para liberar las burbujas de aire. **Cierre el grifo** para verificar goteos. Haga los ajustes que sean necesarios.

11. Conexión de la máquina para hacer Hielo.

A. Cierre y utilice una pieza entre 2" y 3" del tubo de plástico transparente de 5/16" e inserte firmemente un extremo en el conector de unión que está enroscado en la tubería, empujando hacia fuera debajo del mostrador (Lea el numeral 7A. Ver ilustraciones A, B & Foto 6). Inserte firmemente el otro extremo de esta pequeña pieza del tubo en un extremo de la conexión rápida de la válvula T de la máquina para hacer Hielo (ilustraciones A, B y Foto 4).

B. Ahora, se puede insertar un tubo de 5/16" más largo en el extremo abierto de la válvula T de la máquina para hacer Hielo de 5/16" (Foto 4) y el otro extremo del tubo en el puerto de "SALIDA" de la base del filtro de agua. **NOTA:** Asegúrese que el tubo de 5/16" es lo suficientemente largo.

C. Inserte firmemente el tubo* que irá a la máquina para hacer hielo en el último extremo abierto de la válvula T de la máquina para hacer hielo (ilustraciones A, B y Foto 4).

Refiérase a los numerales 8 y 9 y siga las instrucciones.

***NOTA:** Como la mayoría de los tubos de conexión para las máquinas para hacer hielo son de 1/4" un reductor de 5/16" a 1/4" (incluido, la foto 6) tendrá que ser añadido. Coloque un pedazo de 3" a 4" de tubería de 5/16" en la parte central de la válvula T (foto 4). A continuación introduzca el tubo de 5/16" al final del reductor e introduzca el tubo de 1/4" en el otro extremo del reductor que va hacia la nevera.

Recuerde, cierre la válvula de la línea de **AGUA FRÍA** siempre que tenga que trabajar en el filtro.



Foto 1
Grifo Universal



Foto 2
La válvula de cierre de ángulo



Foto 6
Ejemplo Instalación de la máquina para hacer hielo



Foto 3
Conector de manguera y cierre



Foto 4
Válvula T Máquina para hacer hielo

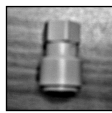
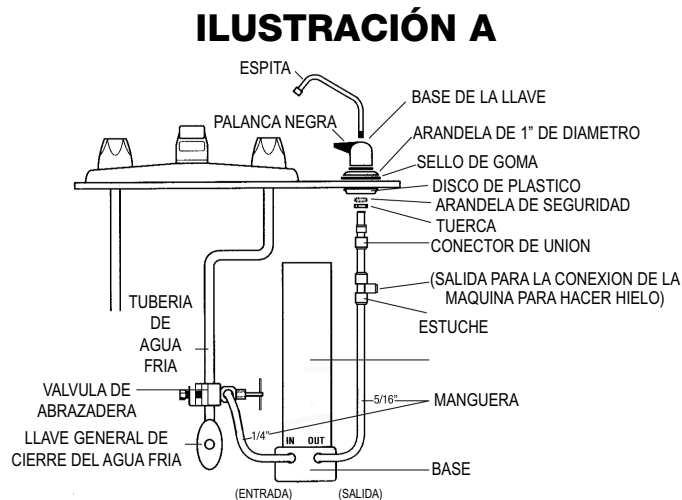


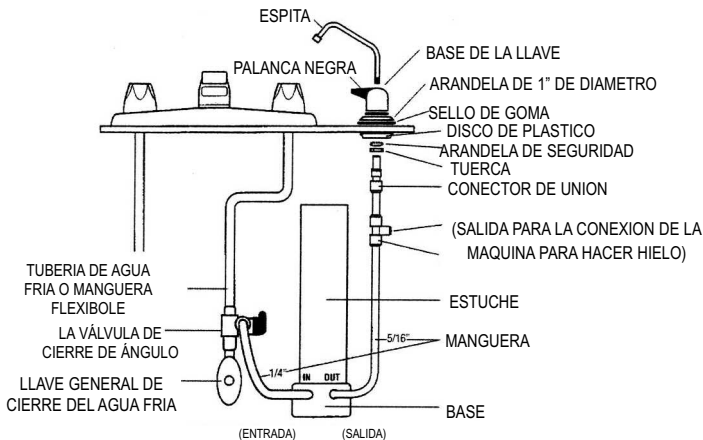
Foto 5
Conector de unión

Opcional



Asegúrese de instalar la válvula de abrazadera a la tubería de **AGUA FRÍA** solamente

ILUSTRACIÓN B

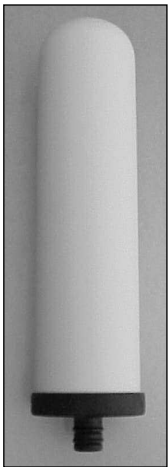


Asegúrese de instalar la válvula de cierre de ángulo a la tubería de **AGUA FRÍA** solamente

ILUSTRACIÓN C



CONEXIÓN DE PRESIÓN



CARTRIDGE INSTALLATION

NOTE: Cartridge is packaged separately and must be installed into water filter.

- 1a. **10" Filter** - Unscrew clamp ring, that is holding upper housing to the base, using the tool provided and by using a counter-clockwise motion to remove it.
- 1b. **15" & 20" Filters** - Unscrew housing from base turning counter-clockwise. Remove cartridge from box.
2. Remove any packing that may be protecting cartridge.
3. Prior to inserting ceramic cartridge into filters base, check to ensure that the small "O" rings located on the end cap stem are properly fitted into their channels.
4. Insert ceramic cartridges end cap stem into the base and firmly press it down taking care to keep ceramic clean and to avoid chipping or fracturing it.

5. Prior to fitting the upper housing onto the base make sure the large rubber washer ring is seated in the channel around and just below the outside threads on the housing.

6. **For 10" Filters** - Fit upper housing onto the base and screw on the clamp ring in a clockwise motion, using tool provided.

CARTRIDGE CLEANING OR REPLACEMENT

When the water flow rate coming out of your filter slows, it is an indication that the fine pores on the surface of the ceramic cartridge have become blocked by algae, bacteria, rust particles, etc. it is time to clean the ceramic element per the following directions:

1. Lift up lever on filter faucet, turning water on.
2. Turn off water going to the filter at the Angle Stop Valve (Figure B).
3. Hold filter above a sink or in a bucket to avoid spillage prior to unscrewing filter's housing from the base in a counter-clockwise direction to remove clamp ring.
4. CAREFULLY pull out ceramic cartridge from filters base.
5. Hold the cartridge under cold running water and clean with the scrub pad provided or with a soft brush. Be sure pad or brush contains NO detergents or soap.
6. Periodically lubricate the housing threads with petroleum jelly (Vaseline) for ease of cartridge removal and cleaning.
7. Prior to inserting ceramic cartridge into filters base, check to ensure that the small "O" rings located on the end cap stem are properly fitted into their channels.
8. **10" Filter only** - Insert ceramic cartridges end cap stem into the base and firmly press it down taking care to keep ceramic clean and to avoid chipping or fracturing it.
9. Prior to fitting the upper housing onto the base make sure the large rubber washer ring is seated in the channel around and just below the outside threads on the housing.
10. **10" Filter** - Fit upper housing onto the base and screw on the clamp ring in a clockwise motion, using tool provided. Turn on inline valve water supply.
- 10a. **15" & 20" Filters** - Place cartridge into the stainless steel housing and securely tighten base to housing. Turn on water supply to filter.
11. Check for leaks.
12. Be sure to replace your cartridge at least once a year. In very high sediment areas or in other extreme conditions you should consider replacing it more frequently (See Cartridge Warranty).

HELPFUL MAINTENANCE HINTS

Indication: Leaks.

Solution: Inspect all connections and tubing. Movement of the filter may cause loosening of fittings or crimping of tubing. Turn off cold-water source and tighten fittings or replace damaged tubing.

Indication: Water flow is unsatisfactory.

Solution 1: Normal water flow from the filter is approximately one-half gallon per minute. If, after cleaning, the flow has not improved, it may be the cartridge needs replacing, especially if the quality of the water being filtered is poor.

Solution 2: Turn filter upside down to see if air bubbles are still in filter.

Indication: Burst tubing.

Solution: This situation is usually caused by hot water being used. See warranty detail that offers you a replacement at any time, for one-half the price.

Indication: Diverter Valve Pin/Lever sticks.

Solution: Disconnect Diverter Valve assembly from the faucet and soak over night in white vinegar. This will generally clear out calcium build up inside the assembly. See warranty detail that offers you a replacement at any time, for one-half the price.

Indication: None of the above solutions have helped.

Solution: Please contact Carico's Water Department via email, telephone, or by letter to address listed below.

LIMITED WARRANTY

Carico International, Inc. ("Carico") warrants the stainless steel filter housing of your Nutri-Tech System ("System") to be free from defects in material and workmanship for the lifetime of the original purchaser; and warrants its cartridges for twelve (12) months on a pro rata basis from the purchase date by the original purchaser. If for any reason you want to replace your cartridge sooner, you must pay Carico a minimum charge of twenty five percent (25%) of the retail price of the cartridge at the time you seek replacement; after which your cartridge is prorated at one twelfth (1/12) its current replacement cost for each month from the date of purchase in excess of three, plus shipping and handling. This warranty extends only to the original purchaser of the System, and does not apply if: (1) the System has been altered in any way; (2) if the purchaser fails to follow Carico's instructions for proper care of the System; and/or (3) if the purchaser fails to replace the cartridge within one (1) year.

IN NO EVENT SHALL CARICO, ITS AFFILIATES, SUBSIDIARIES, RELATED ENTITIES OR THEIR RESPECTIVE OFFICERS, DIRECTORS, OR EMPLOYEES, BE LIABLE

FOR INCIDENTAL, CONSEQUENTIAL, PUNITIVE, EXEMPLARY, OR SPECIAL DAMAGES RESULTING FROM THE USE OF THIS PRODUCT, OR ARISING OUT OF ANY BREACH OF THIS WARRANTY. (As examples, this excludes damages for lost time; travel to and from Carico, and cost of shipping to and from Carico. The items listed are not exclusive, but are for illustration only.) **ALL EXPRESS AND IMPLIED WARRANTIES, INCLUDING THE WARRANTY OF MERCHANTABILITY, ARE LIMITED TO THE PERIOD OF THE LIMITED WARRANTY.** Some states do not allow the exclusion or limitation of incidental or consequential damages, or limitations on how long an implied warranty lasts, so the exclusions may not apply to you. This warranty gives you specific legal rights and you may also have other rights which vary from state to state.

Carico's sole obligation under this limited warranty or any implied warranty, and the purchaser's sole remedy, is, at Carico's sole discretion, limited to the repair or replacement of the Stainless steel housing or the replacing the cartridge on a prorated basis of Carico's suggested retail purchase price at the time of replacement plus shipping and handling to and from the address below.

If the Product has a defect in material or workmanship in the first thirty (30) days from the date of purchase, Carico will repair or replace the unit at no cost to the original purchaser; provided the original purchaser immediately notifies Carico within said thirty (30) days as detailed below.

If the System is damaged or destroyed by misuse, neglect, accident or act of God, including but not limited to, fire, flood, storm and/or earthquake, Carico will replace the System for fifty percent (50%) of Carico's suggested retail purchase price at the time replacement is sought plus shipping and handling to and from the address below. To obtain coverage under this Limited Warranty, Purchaser must submit proof of loss and proof of original purchase to Carico in writing within sixty (60) days of occurrence.

When returning product to Carico, all returns require a return authorization number. Write, call or email:

CARICO INTERNATIONAL, INC
2851 West Cypress Creek Road
Fort Lauderdale, FL 33309
1-800-440-1434
1-954-973-3900 - International
Email: customerservice@carico.com
www.carico.com

The duration, terms and conditions of this warranty are valid worldwide, except where different limitations, restrictions or conditions may be required by local law.